

# mdf italia



© COPYRIGHT 2024 MDF ITALIA SRL SOCIETA' UNIPERSONALE

2023

## ROCK TABLE MAXI

Designed by Jean Marie Massaud

Rock Table is a family of indoor and outdoor tables with an elegant, fluid silhouette, characterised by a solid central conical base and a thin top that appears to float. The new model features a top with an unusual and interesting shape: a rectangle with rounded corners with a physiognomy that fosters a direct relationship among those sitting around the table, facilitating interaction and dialogue.

A style that combines radicality and sensuality, softness and boldness, and complements modern outdoor home environments as well as rooftop or dehor area of offices or hotels, where it leaves its own unique, bold mark.

[DISCOVER THE INDOOR VERSION](#)

### DIMENSIONS

This table is available in two different sizes:

. L210 D105 H72

. L240 D115 H72

The height of H72 has a dimensional tolerance of +/- 1 cm. Variations are to be considered, especially for tables with concrete tops.

### TABLETOP

#### CEMENT

In white or anthracite UHPFRC cement (ultra high performance, fibre reinforced cement), with high technical / structural characteristics. Tops: 80, 100, 120, 140, 250 e 300 cm.

#### STONE CHIP CEMENT

In UHPFRC cement (ultra high performance, fibre reinforced cement), with high technical / structural characteristics, coloured in mass using natural oxides, enhanced with a stone surface made up of Alpine rocks and stones (white and green stone chip top), or stone chip made up of stones from Tuscany (terracotta top).

# MONOCHROME COMBINATIONS

## WHITE VERSION

Base in natural cement, matt white tube and flange, white cement or white stone chip cement top.

## ANTHRACITE VERSION

Base in anthracite cement, matt anthracite tube and flange and anthracite cement top.

## ORANGE VERSION

Base in terracotta cement, matt orange tube and flange, terracotta stone chip cement top.

## GREEN VERSION

Base in green cement, matt green tube and flange, green stone chip cement top.

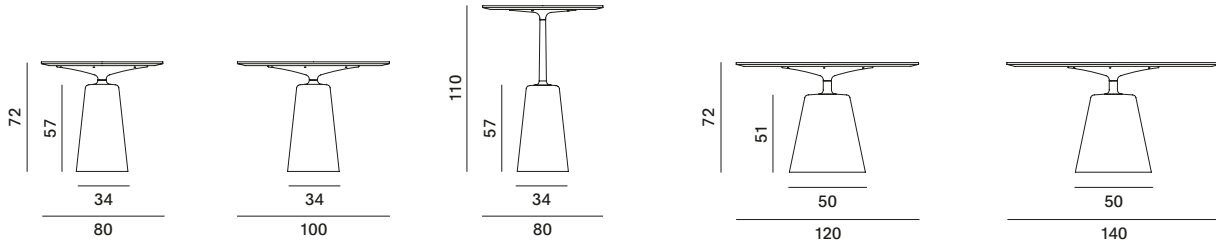
**Rock Table**



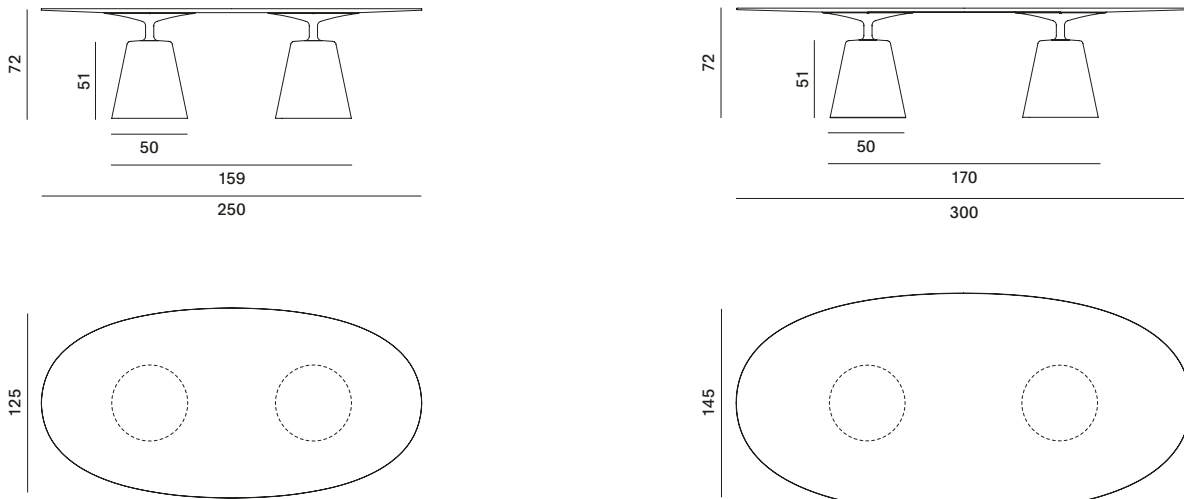
The height of H72 has a dimensional tolerance of  $\pm$  cm. Variations are to be considered, especially for tables with cement tops.

**Round tables with narrow base**

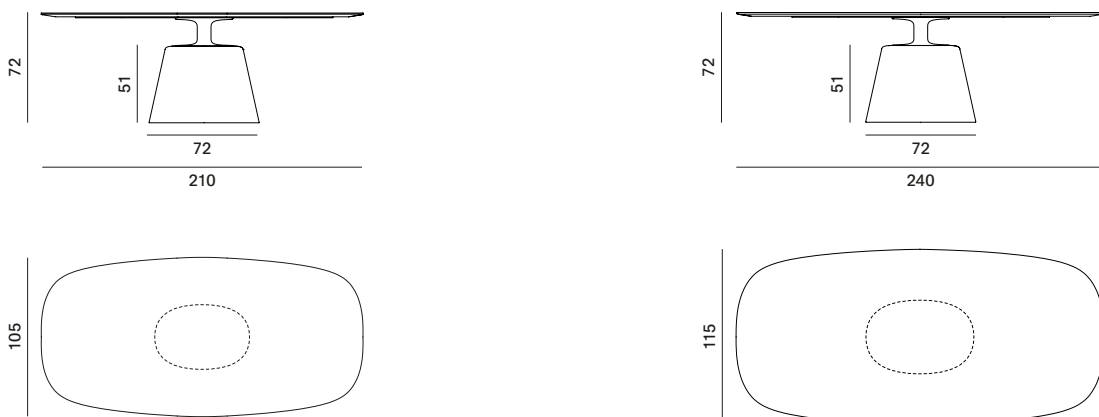
**Round tables with wide base**



**Oval tables with double base**



**Maxi table**



# Finishing

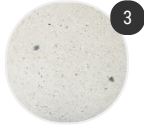
The number in the dot corresponds to the number of colour/material finish.

Here below, in the section FINISH OPTIONS, please note all the colours of the materials used for this product.

## TABLE

---

### Top



Stone chip cement



Cement

---

### Structure



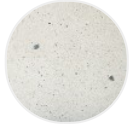
Cement

# Finish options

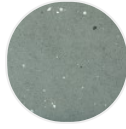
## TOP

---

### Stone chip cement



White stone  
chip cement



Green stone  
chip cement

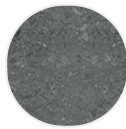


Terracotta  
stone chip  
cement

### Cement



White cement



Anthracite  
cement

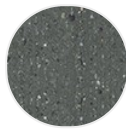
## STRUCTURE

---

### Cement



Cement  
natural X080



Cement  
anthracite  
X081



Cement green



Cement  
terracotta